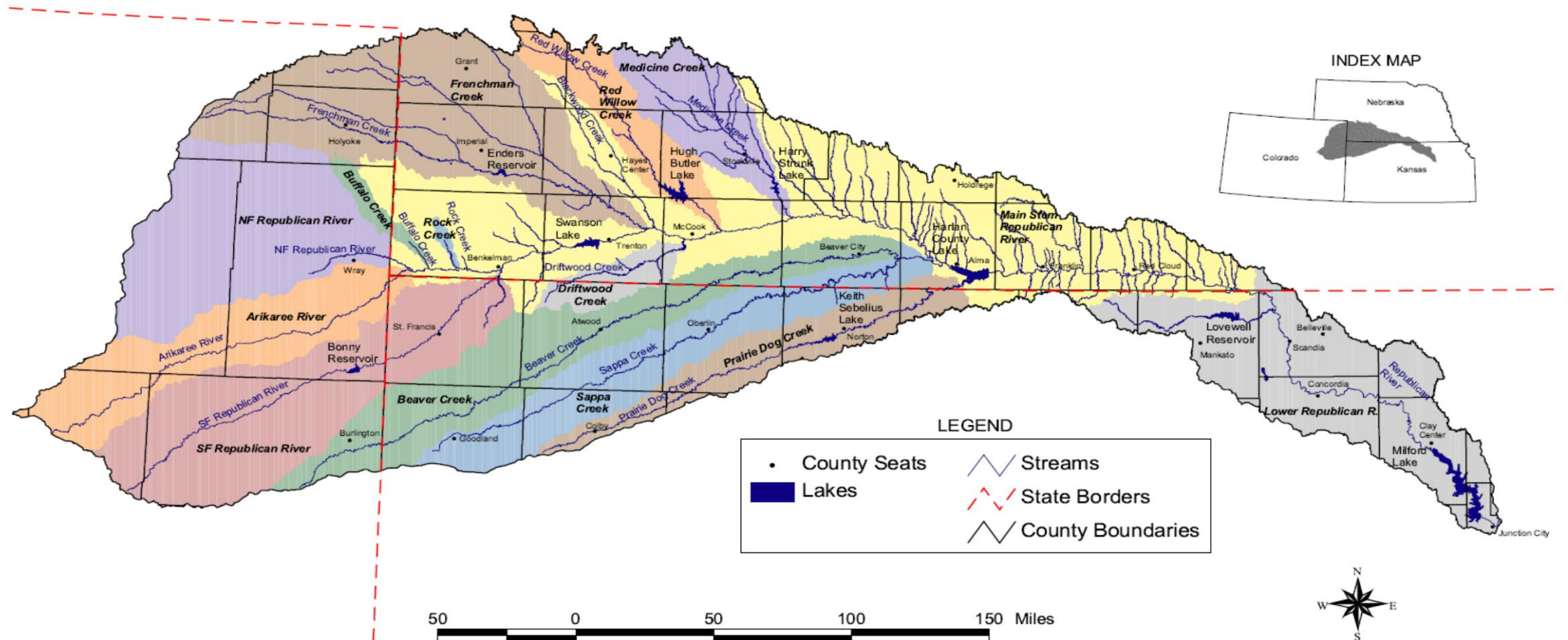


South Central Water Conference

2025 Producer Update and Basin Outlook Lower Republican NRD



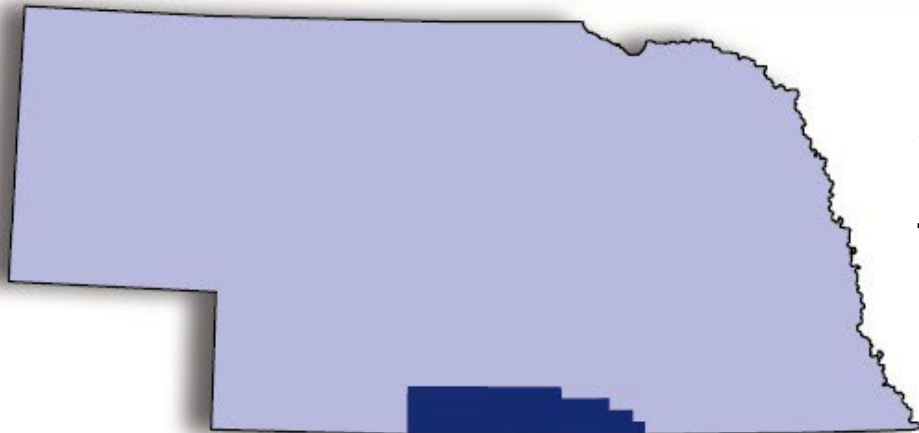
LOWER REPUBLICAN NRD

Furnas Co.

Harlan Co.

Franklin Co.

Webster Co.



“If all you are trying to do is essentially the same thing as everyone else, then it’s unlikely you will be very successful.”

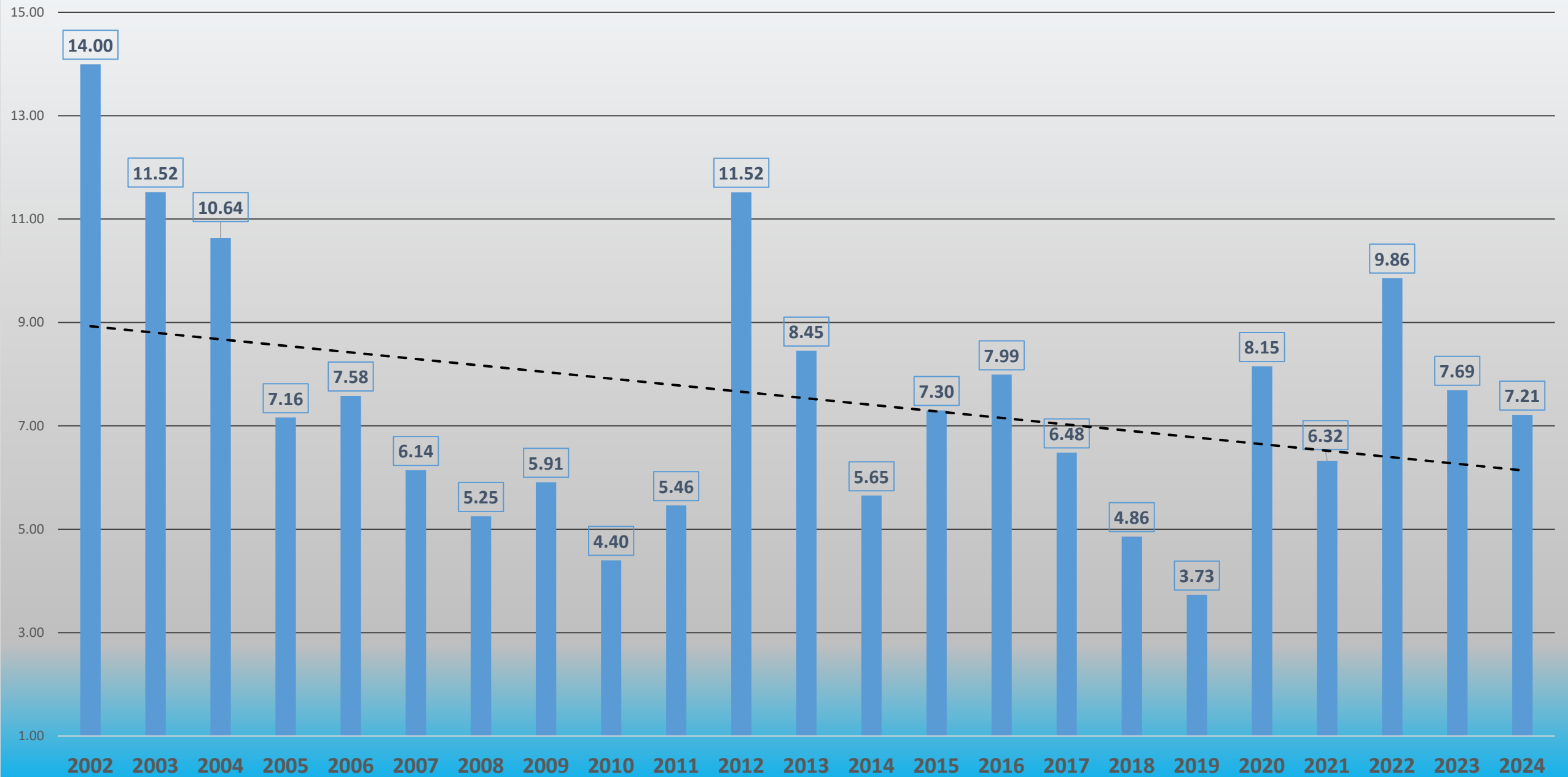
~ Michael Porter

Lower Republican NRD

LRNRD: DISTRICTWIDE WATER USAGE 2003 - 2022

2003 = 13.03 inches per acre	2014 = 5.65 inches per acre
2004 = 11.24 inches per acre	2015 = 7.30 inches per acre
2005 = 7.17 inches per acre	2016 = 7.99 inches per acre
2006 = 7.58 inches per acre	2017 = 6.46 inches per acre
2007 = 6.11 inches per acre	2018 = 4.86 inches per acre
2008 = 5.25 inches per acre	2019 = 3.73 inches per acre
2009 = 5.92 inches per acre	2020 = 8.15 inches per acre
2010 = 4.44 inches per acre	2021 = 6.32 inches per acre
2011 = 5.46 inches per acre	2022 = 9.86 inches per acre
2012 = 11.52 inches per acre	2023 = 7.69 inches per acre
2013 = 8.45 inches per acre	2024 = 7.21 inches per acre

LRNRD Groundwater Pumping 2002-2024



Lower Republican NRD

GROUNDWATER IRRIGATION ALLOCATIONS, 2023-2027

Total Allocation	45 Inches/Acre/5 Years
Annual or Base Allocation	9 Inches/Acre/Year
Maximum Annual Use	45 Inches/Acre (13 Inches/Acre in a Compact Call Year)
Carry over amount that can be used in the following allocation period	9 Inches/Acre (Max)
Hard Cap	13 Inches/Acre/Year (in a Compact Call Year)
Pooling allowed?	Yes
How are the allocations affected by surface water use?	Allocations are not affected by surface water use. Irrigators may use their full groundwater allocation, regardless of any surface water use.

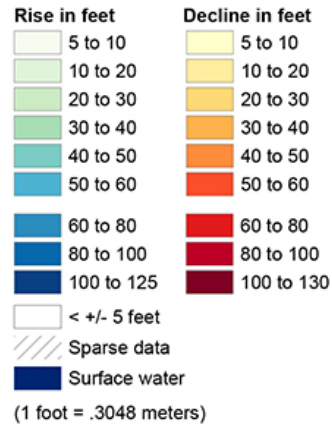
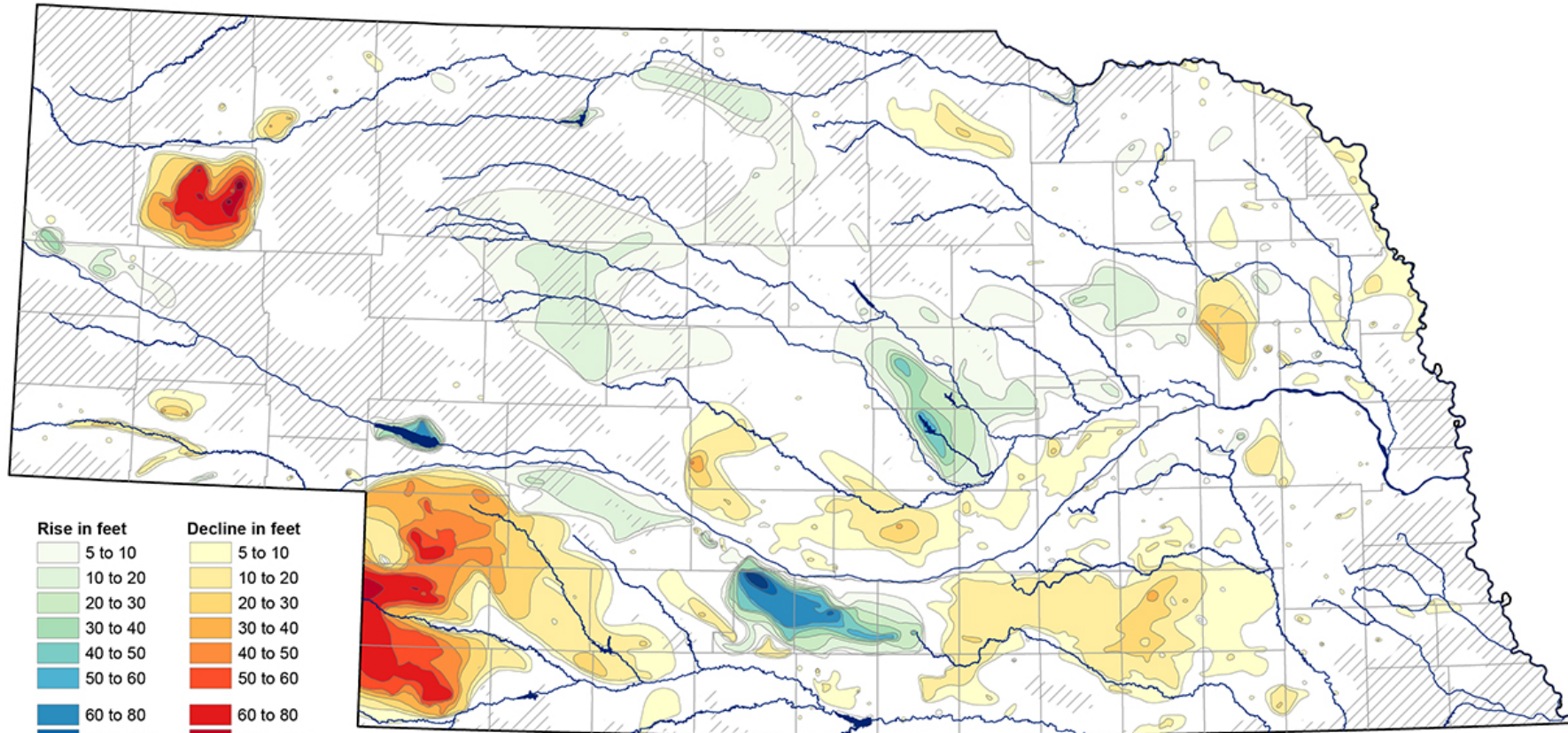
A billboard stands in a desolate, arid landscape. The ground is parched and cracked into large, irregular polygons. Sparse, dry vegetation is scattered across the scene. The billboard's message is a stark contrast to the environment.

Food Grows Where Water Flows

"When the well is dry, we'll
know the worth of water."

~ Benjamin Franklin

Groundwater-Level Changes in Nebraska - Predevelopment to Spring 2023



For an explanation of information presented on this map, see the 2023 Nebraska Statewide Groundwater-Level Monitoring Report, available for download at go.unl.edu/groundwater

CONSERVATION AND SURVEY DIVISION (<http://snr.unl.edu/csd>)
 School of Natural Resources (<http://snr.unl.edu>)
 Institute of Agriculture and Natural Resources
 University of Nebraska-Lincoln

Aaron Young, Survey Geologist, CSD
 Mark Burbach, Water Levels Program Supervisor, CSD

Data provided by:
 Nebraska Natural Resources Districts
 Central Nebraska Public Power and Irrigation District
 U.S. Geological Survey
 Nebraska Water Science Center
 U.S. Bureau of Reclamation
 Kansas-Nebraska Area Office
 Conservation and Survey Division,
 University of Nebraska - Lincoln



The University of Nebraska-Lincoln does not discriminate based on gender, age, disability, race, color, religion, marital status, veteran's status, national or ethnic origin, or sexual orientation.

February 2024

Disclaimer: groundwater-level changes on this map are depicted at a small scale. They are intended to provide only a general overview of regional variation.

Current and Future Projects

NCORPE Augmentation Project

HydroData/Producer Connect (Nitrogen Dashboard)

Rural Water District – Riverton Extension

Platte-to-Republican Diversion Project

Flag Creek Augmentation Project

WaterSMART grant for Telemetry Flowmeters – Phase I

Weather Stations for Rubicon Gates on Irrigation District Canals

WaterSMART grant for Telemetry Flowmeters – Phase II

- Tract
- Wells
- Flowmeters
- Chemigation
- Soil Samples
- Crops & Management
- Nitrogen
- Settings

Total Tract Acres
233.5

Reported Corn Yield
225 bu / ac
7% ↑ than last year

Total Pumping
1913.56
66% ↑ than last year



Messages

DATE	MESSAGE TITLE	TYPE	ACTIONS
------	---------------	------	---------

Flowmeter and Usage Overview

Total Water Usage

2844.21 ac-in

2179.52% ↑ than last year



Water Use per Acre

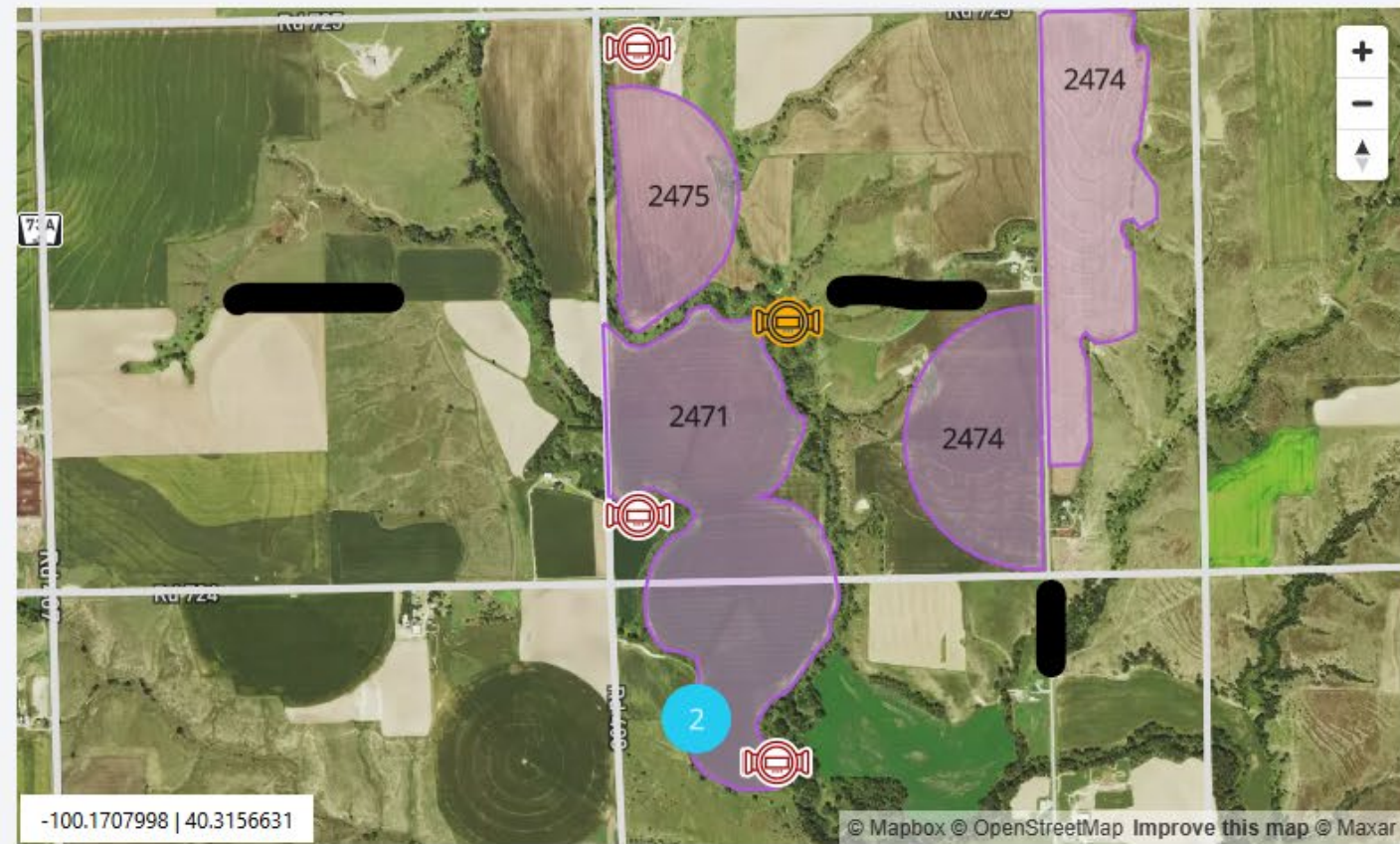
4.71 in / ac

3.61% ↑ than last year



Flowmeter Count

7



Flowmeter Info

FLOWMETER ID	METER LOCATION	SERIAL NO	FACTOR	ALIAS
6537		23-08588	0.01	
2018		00-10-1104N	1000	
2533	submers west of creek south	02-6-1338N	100	
6464	Well	23-04873	0.01	
6492		23-08555	0.01	
				--

**“You can't manage what
you don't measure”**

~ Peter Drucker



PARTNERSHIPS

- ▶ USDA-NRCS
- ▶ NARD
- ▶ NACD
- ▶ DEPT OF NATURAL RESOURCES
- ▶ US ARMY CORPS OF ENGINEERS
- ▶ US BUREAU OF RECLAMATION
- ▶ TRAILBLAZER RC&D
- ▶ TWIN VALLEY WMA
- ▶ SOUTHWEST WMA
- ▶ FRENCHMAN-CAMBRIDGE ID
- ▶ NEBRASKA BOSTWICK ID
- ▶ NE WATER RESOURCES ASSOCIATION
- ▶ DISTRICT SCHOOLS & FFA PROGRAMS
- ▶ PRD
- ▶ CENTRAL NE PP&ID
- ▶ COUNTY GOVERNMENTS
- ▶ MUNICIPALITIES
- ▶ USDA-FOREST SERVICE
- ▶ NE-FOREST SERVICE
- ▶ NCORPE
- ▶ NDEE
- ▶ UNIVERSITY OF NEBRASKA
- ▶ USGS
- ▶ NEBRASKA GAME & PARKS
- ▶ REPUBLICAN RIVER COMPACT – KS & CO
- ▶ SUPERIOR HARDY SPA – Little Blue
- ▶ NEBRASKA ENVIRONMENTAL TRUST
- ▶ MCCROMETER
- ▶ NEBRASKA LEAD PROGRAM

